

Original Investigation

Prognostic Effect of *BRAF* and *KRAS* Mutations in Patients With Stage III Colon Cancer Treated With Leucovorin, Fluorouracil, and Oxaliplatin With or Without Cetuximab

A Post Hoc Analysis of the PETACC-8 Trial

Julien Taieb, MD, PhD; Aziz Zaanani, MD, PhD; Karine Le Malicot, MS; Catherine Julié, MD; Hélène Blons, MD, PhD; Laurent Mineur, MD; Jaafar Bennouna, MD, PhD; Josep Tabernero, MD, PhD; Enrico Mini, MD, PhD; Gunnar Folprecht, MD, PhD; Jean Luc Van Laethem, MD, PhD; Come Lepage, MD, PhD; Jean-François Emile, MD, PhD; Pierre Laurent-Puig, MD, PhD

IMPORTANCE The prognostic value of *BRAF* and *KRAS* mutations in patients who have undergone resection for colon cancer and have been treated with combination leucovorin, fluorouracil, and oxaliplatin (FOLFOX)-based adjuvant chemotherapy is controversial, possibly owing to a lack of stratification on mismatch repair status.

OBJECTIVE To examine the prognostic effect of *BRAF* and *KRAS* mutations in patients with stage III colon cancer treated with adjuvant FOLFOX with or without cetuximab.

DESIGN, SETTING, AND PARTICIPANTS This study included patients with available tumor blocks of resected stage III colon adenocarcinoma who participated between December 2005 and November 2009 in the PETACC-8 phase III randomized trial. Mismatch repair, *BRAF* V600E, and *KRAS* exon 2 mutational status were determined on prospectively collected tumor blocks from 2559 patients enrolled in the PETACC-8 trial. The data were analyzed in April 2015.

INTERVENTION Patients were randomly assigned to receive 6 months of FOLFOX4 or FOLFOX4 plus cetuximab after surgical resection for stage III colon cancer.

MAIN OUTCOMES AND MEASURES Associations between these biomarkers and disease-free survival (DFS) and overall survival (OS) were analyzed with Cox proportional hazards models. Multivariate models were adjusted for covariates (age, sex, tumor grade, T/N stage, tumor location, Eastern Cooperative Oncology Group performance status).

RESULTS Among the 2559 patients enrolled in the PETACC-8 trial (42.9% female; median [range] age, 60.0 [19.0-75.0] years), microsatellite instability (MSI) phenotype, *KRAS*, and *BRAF* V600E mutations were detected in, respectively, 9.9% (177 of 1791), 33.1% (588 of 1776), and 9.0% (148 of 1643) of cases. In multivariate analysis, MSI (hazard ratio [HR] for DFS: 1.10 [95% CI, 0.73-1.64], $P = .67$; HR for OS: 1.02 [95% CI, 0.61-1.69], $P = .94$) and *BRAF* V600E mutation (HR for DFS: 1.22 [95% CI, 0.81-1.85], $P = .34$; HR for OS: 1.13 [95% CI, 0.64-2.00], $P = .66$) were not prognostic, whereas *KRAS* mutation was significantly associated with shorter DFS (HR, 1.55 [95% CI, 1.23-1.95]; $P < .001$) and OS (HR, 1.56 [95% CI, 1.12-2.15]; $P = .008$). The subgroup analysis showed in patients with microsatellite-stable tumors that both *KRAS* (HR for DFS: 1.64 [95% CI, 1.29-2.08], $P < .001$; HR for OS: 1.71 [95% CI, 1.21-2.41], $P = .002$) and *BRAF* V600E mutation (HR for DFS: 1.74 [95% CI, 1.14-2.69], $P = .01$; HR for OS: 1.84 [95% CI, 1.01-3.36], $P = .046$) were independently associated with worse clinical outcomes. In patients with MSI tumors, *KRAS* status was not prognostic, whereas *BRAF* V600E mutation was associated with significantly longer DFS (HR, 0.23 [95% CI, 0.06-0.92]; $P = .04$) but not OS (HR, 0.19 [95% CI, 0.03-1.24]; $P = .08$).

CONCLUSIONS AND RELEVANCE *BRAF* V600E and *KRAS* mutations were significantly associated with shorter DFS and OS in patients with microsatellite-stable tumors but not in patients with MSI tumors. Future trials in the adjuvant setting will have to take into account mismatch repair, *BRAF*, and *KRAS* status for stratification.

TRIAL REGISTRATION EudraCT 2005-003463-23

JAMA Oncol. doi:10.1001/jamaoncol.2015.5225
Published online January 14, 2016.

← Invited Commentary

+ Supplemental content at
jamaoncology.com

Author Affiliations: Author affiliations are listed at the end of this article.

Corresponding Author: Julien Taieb, MD, PhD, Department of Gastroenterology and Digestive Oncology, European Georges Pompidou Hospital, and Paris Descartes University, 20 rue Leblanc, 75015 Paris, France (julien.taieb@egp.aphp.fr).

Colorectal cancer (CRC) is the third most common cancer worldwide, causing more than 600 000 deaths each year.¹ Disease stage remains the strongest prognostic variable and is the key determinant of treatment. The majority of newly diagnosed cases of CRC are in patients with non-metastatic disease that can potentially be cured by surgery, either alone or combined with adjuvant chemotherapy. However, there is considerable stage-independent prognostic variability, likely due to tumor characteristics. Colorectal cancer is a biologically heterogeneous disease that develops via 2 well-described pathways of colorectal carcinogenesis, including chromosomal instability and, less commonly, microsatellite instability (MSI), which occurs in approximately 15% of cases. Microsatellite instability is a consequence of deficient DNA mismatch repair (MMR) that results in the accumulation of insertion and/or deletion mutations within microsatellite DNA regions.² Deficient MMR can result from inheritance of a germline mutation in an MMR gene (*MLH1*, *MSH2*, *MSH6*, *PMS2*), causing Lynch syndrome,³ or more commonly, from epigenetic inactivation of *MLH1*,⁴ which is associated with hypermethylation of the promoter regions of cancer-specific genes, a situation known as the CpG island methylator phenotype (CIMP).⁵ Sporadic MSI CRC tumors are enriched with the *BRAF*-activating somatic V600E mutation (*BRAF* V600E), which is absent from MSI tumors associated with Lynch syndrome.⁶ The *BRAF* V600E mutation has an overall frequency of approximately 10% in all CRCs and is mutually exclusive of *KRAS* mutations, which are detected in 40% to 45% of cases.^{7,8}

Although *KRAS* mutations are predictive of resistance to epidermal growth factor receptor inhibitors in metastatic CRC,⁹⁻¹¹ and although *BRAF* V600E is now recognized as a marker of poor prognosis in this setting,^{8,12} the prognostic effect of these mutations in nonmetastatic CRC is controversial. *KRAS* mutations have been linked to disease recurrence and poorer overall survival in some studies but not in others, and there is some evidence that its role depends on the tumor site.^{7,13-16} Consistent data indicate that *BRAF* V600E mutation is associated with poor outcomes after relapse,^{14,17} but its direct effect on recurrence for patients in the adjuvant setting requires clarification.^{7,14,18,19} Most studies have shown an association of MSI phenotype with a better survival in earlier tumor stage, whereas the effect in stage III tumors is more controversial, and data in patients treated by the current combination leucovorin, fluorouracil, and oxaliplatin (FOLFOX) standard are scarce.¹⁹⁻²¹

Prognostic evaluation of these biomarkers is hampered by the fact that published data often mix prospective and retrospective studies, colon and rectal cancer, stage I to III tumors, and patients who did or did not receive a variety of adjuvant regimens; also, tumors are often not uniformly analyzed for all these biological molecular markers together (MSI, *KRAS*, *BRAF*). In fact, the frequency of *KRAS* and *BRAF* V600E mutations differs according to MMR status, and this may have impaired our interpretation of the effect of these mutations on clinical outcomes. We therefore examined disease-free survival (DFS) and overall survival (OS) according to MMR, *KRAS*, and *BRAF* status, determined on stage III colon cancer specimens collected prospectively from patients who received adjuvant FOLFOX alone or combined with cetuximab in the PETACC-8 randomized clinical trial. We also ex-

Key Points

Question What is the prognostic value of *BRAF* and *KRAS* mutations in patients who have undergone resection for colon cancer and have been treated with combination leucovorin, fluorouracil, and oxaliplatin (FOLFOX)-based adjuvant chemotherapy?

Findings This post hoc analysis of patients with stage III colon cancer who participated in the PETACC-8 phase III randomized clinical trial found that in patients with microsatellite-stable tumors, both *KRAS* and *BRAF* V600E mutations were independently linked to shorter disease-free and overall survival. In patients with microsatellite-unstable tumors, *KRAS* status was not prognostic, whereas *BRAF* V600E mutation was associated with significantly longer disease-free but not overall survival.

Meaning Microsatellite, *KRAS*, and *BRAF* V600E status assessment should be mandatory to stratify adequately in future adjuvant trials and must be discussed in our daily practice.

amined the prognostic value of *KRAS* and *BRAF* V600E mutations according to MMR status.

Methods

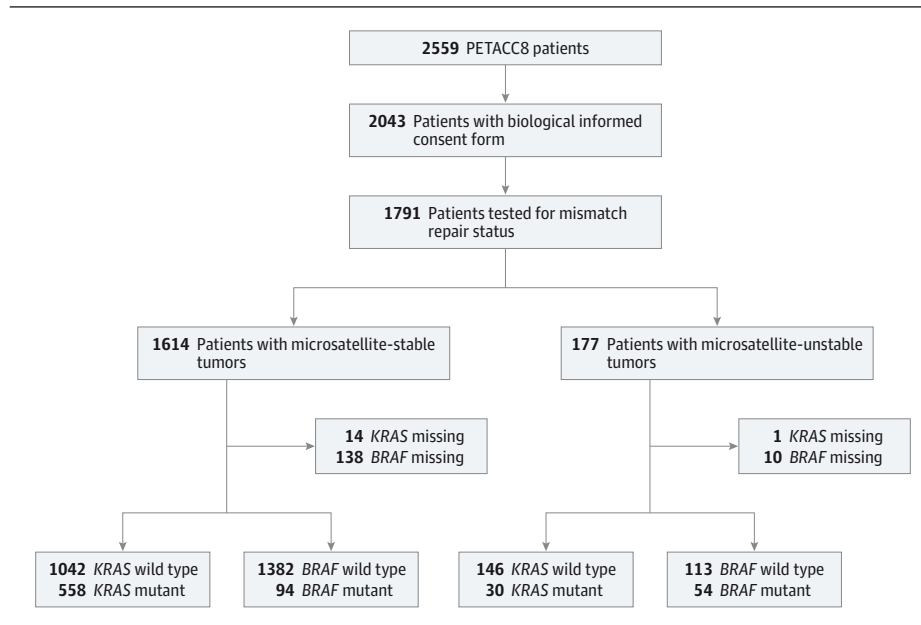
Study Population

This study included all patients with biological informed consent signed and available tumor blocks of resected stage III (any T, N1 or N2, MO) colon adenocarcinoma who have participated in the PETACC-8 phase III randomized trial.²² Patients in this trial were randomized to receive 6 months of FOLFOX4: 85 mg/m² oxaliplatin (2-hour infusion) on day 1, and leucovorin 200 mg/m² followed by fluorouracil (bolus) 400 mg/m² and a 22-hour continuous infusion of fluorouracil 600 mg/m² for 2 consecutive days, or FOLFOX4 plus cetuximab. The PETACC-8 study included 2559 patients between December 2005 and November 2009 and was amended in June 2008 to restrict random assignment to patients whose tumors expressed wild-type *KRAS*. Among the 2096 patients randomized before amendment, 1881 (90%) were retrospectively screened for *KRAS* mutations. The PETACC-8 trial, which received ethical approval for the study protocol and the translational data research integration, demonstrates that the addition of cetuximab to FOLFOX4 did not improve DFS compared with FOLFOX4 alone in patients with *KRAS* exon 2 wild-type resected stage III colon cancer.

MMR Status Determination

Mismatch repair tumor status was determined by immunohistochemical analysis (IHC), or by MSI testing when IHC was indeterminate. Microsatellite instability phenotype tumors were defined as exhibiting the loss of expression of 1 or more MMR proteins by IHC or exhibiting high-level tumor DNA MSI on MSI testing. Microsatellite-stable (MSS) phenotype tumors were defined by normal MMR protein expression in IHC, or MSS or low-level MSI status on MSI testing.

Figure 1. Flowchart of PETACC-8 Trial Molecular Study Evaluating the Prognostic Impact of Mismatch Repair, *KRAS*, and *BRAF* Status



Immunohistochemical Analysis

Mismatch repair protein (MLH1, MSH2, MSH6, PMS2) expression was analyzed by IHC on tissue microarrays. Primary monoclonal antibodies against MLH1 (clone G168-728, diluted 1:100; BD Pharmingen), MSH2 (clone FE11, diluted 1:100; Oncogene Research Products), MSH6 (clone 44, diluted 1:100; BD Pharmingen), and PMS2 (clone A16-4, diluted 1:100; BD Pharmingen) were applied. Mismatch repair protein loss was defined as the absence of nuclear staining in neoplastic cells but positive nuclear staining in lymphocytes and normal adjacent colonic epithelium.²³

MSI Testing

DNA was extracted from formalin-fixed paraffin-embedded (FFPE) tumor tissues for MSI analysis using 5 monomorphic mononucleotide markers (BAT-25, BAT-26, NR-21, NR-24, NR-27).²⁴ Specimens with at least 3 unstable markers were scored as highly unstable, and specimens with fewer than 3 unstable markers were scored as stable.

***BRAF* and *KRAS* Gene Mutations**

BRAF and *KRAS* mutation status was determined on genomic DNA extracted from FFPE tissues, using the QIAamp DNA Mini Kit (Qiagen). Molecular analysis was centralized and carried out retrospectively for patients included before trial amendment and prospectively for all other patients. Testing for 7 *KRAS* exon 2 mutations and the *BRAF* V600E hotspot exon 15 mutation (c.1799T>A/p.V600E) was based on real-time polymerase chain reaction using TaqMan probes (Applied Biosystems). Each assay was validated to detect 10% of mutated alleles.²⁵

Statistical Analysis

Biomarker status was analyzed by investigators blinded to patient outcomes, and then transmitted for survival analyses to

the data center. Disease-free survival was defined as the time between randomization and local or metastatic recurrence, diagnosis of a second colon or rectal cancer, or death, whichever occurred first. Overall survival was measured from randomization until death from any cause. For comparisons of baseline characteristics, categorical outcomes were analyzed with χ^2 tests, and continuous outcomes, with standard parametric or nonparametric tests. Continuous variables are presented as the mean (SD) and median with interquartile range.

Disease-free and overall survival curves were estimated with the Kaplan-Meier method. Differences between groups of patients were analyzed with unstratified log-rank tests. Patients in the 2 treatment arms were combined because no difference was found between the 2 arms for efficacy analyses. An unstratified Cox regression model was used to estimate hazard ratios (HRs), 95% confidence intervals, and *P* values for candidate prognostic factors. Multivariate analyses were adjusted for stratification factors (nodal category, T stage, and obstruction or perforation status), sex, age, Eastern Cooperative Oncology Group performance status, tumor grade, primary tumor location, vascular invasion or lymphatic infiltration (VELI), and MMR, *KRAS*, and *BRAF* status.

Analyses were carried out with a 2-sided significance level of 5%. Results were unadjusted for multiple comparisons. All statistical analyses were performed with the SAS statistical software package, version 9.4.

Results

Patients

Among the 2559 patients included in the PETACC-8 phase III trial, 2043 signed the biological informed consent form, including 1791 patients with available FFPE specimen and no

Table 1. Clinical and Pathological Characteristics According to Mismatch Repair (MMR), *KRAS*, and *BRAF* Status in the Present Study Population

Characteristic	Status, No. (%)								
	MMR			<i>KRAS</i>			<i>BRAF</i>		
	MSS (n = 1614)	MSI (n = 177)	P Value	Wild Type (n = 1188)	Mutant (n = 588)	P Value	Wild Type (n = 1495)	Mutant (n = 148)	P Value
Treatment arm, No.	1614	177	.14	1188	588	.46	1495	148	.26
FOLFOX	799 (49.5)	98 (55.4)		590 (49.7)	303 (51.5)		760 (50.8)	68 (45.9)	
FOLFOX + cetuximab	815 (50.5)	79 (44.6)		598 (50.3)	285 (48.5)		735 (49.2)	80 (54.1)	
Sex, No.	1614	177	.03	1188	588	.23	1495	148	.006
Male	937 (58.1)	88 (49.7)		690 (58.1)	324 (55.1)		872 (58.3)	69 (46.6)	
Female	677 (41.9)	89 (5.3)		498 (41.9)	264 (44.9)		623 (41.7)	79 (53.4)	
Age, No.	1614	177	.60	1188	588	.18	1495	148	.91
≤70 y	1452 (90.0)	157 (88.7)		1075 (90.5)	520 (88.4)		1339 (89.6)	133 (89.9)	
>70 y	162 (10.0)	20 (11.3)		113 (9.5)	68 (11.6)		156 (10.4)	15 (10.1)	
ECOG PS, No.	1557	169	.71	1147	565	.99	1442	141	.12
0	1266 (81.3)	139 (82.2)		934 (81.4)	461 (81.6)		1174 (81.4)	106 (75.2)	
1	285 (18.3)	30 (17.8)		209 (18.2)	102 (18.1)		262 (18.2)	35 (24.8)	
2-3	6 (0.4)	0		4 (0.3)	2 (0.4)		6 (0.4)	0	
Tumor site, No.	1589	173	<.001	1178	571	.02	1468	147	<.001
Distal	1040 (65.4)	34 (19.7)		740 (62.8)	325 (56.9)		939 (64.0)	38 (25.9)	
Proximal	549 (34.6)	139 (8.3)		438 (37.2)	246 (43.1)		529 (36.0)	109 (74.1)	
Tumor grade, No.	1596	172	<.001	1173	581	.34	1477	146	.04
G1-G2	1337 (83.8)	98 (57.0)		947 (80.7)	480 (82.6)		1226 (83.0)	90 (61.6)	
G3-G4	259 (16.2)	74 (43.0)		226 (19.3)	101 (17.4)		251 (17.0)	56 (38.4)	
Lymph node status, No.	1614	177	.82	1188	588	.29	1495	148	.02
pN1	1008 (62.5)	109 (61.6)		733 (61.7)	378 (64.3)		946 (63.3)	79 (53.4)	
pN2	606 (37.5)	68 (38.4)		455 (38.3)	210 (35.7)		549 (36.7)	69 (46.6)	
T stage, No.	1614	177	.19	1188	588	.07	1495	148	.32
pT1/pT2/pTis	158 (9.8)	10 (5.6)		122 (10.3)	46 (7.8)		147 (9.8)	9 (6.1)	
pT3	1122 (69.5)	24 (70.1)		832 (70.0)	404 (68.7)		1035 (69.2)	108 (73.0)	
pT4	333 (20.6)	43 (24.3)		234 (19.7)	138 (23.5)		313 (20.9)	31 (20.9)	
pTx	1 (0.1)	0		0	0		0	0	
Bowel obstruction and/or perforation, No.	1614	177	.08	1188	588	.22	1495	148	.25
Yes	317 (19.6)	25 (14.1)		216 (18.2)	121 (20.6)		279 (18.7)	22 (14.9)	
No	1297 (80.4)	152 (85.9)		972 (81.8)	467 (79.4)		1216 (81.3)	126 (85.1)	
Vascular invasion and/or lymphatic infiltration, No.	1614	177	.41	1188	588	.007	1495	148	.04
Yes	903 (55.9)	104 (58.8)		699 (58.8)	300 (51.0)		827 (55.3)	94 (63.5)	
No	476 (29.5)	44 (24.9)		321 (27.0)	193 (32.8)		452 (30.2)	30 (20.3)	
<i>KRAS</i> , No.	1600	176	<.001				1492	148	<.001
Wild type	1042 (65.1)	146 (83.0)					959 (64.3)	144 (97.3)	
Mutated	558 (34.9)	30 (17.0)					533 (35.7)	4 (2.7)	
<i>BRAF</i> , No.	1476	167	<.001	1103	537	<.001			
Wild type	1382 (93.6)	113 (67.7)		959 (86.9)	533 (99.3)				
Mutated	94 (6.4)	54 (32.3)		144 (13.1)	4 (0.7)				

Abbreviations: ECOG PS, Eastern Cooperative Oncology Group performance status; FOLFOX, leucovorin, fluorouracil, and oxaliplatin; MMR, mismatch repair; MSI, microsatellite instability; MSS, microsatellite stability; NA, not applicable; OS, overall survival.

technical failure for the MMR status analysis. One hundred forty-eight (8.3%) and 15 (0.8%) of these patients were respectively excluded from *BRAF* V600E and *KRAS* exon 2 mutation analysis because of a technical issue (insufficient material or test failure) (Figure 1).

Characteristics of the study population are presented in Table 1. No noteworthy difference was observed between the

present study population and the entire PETACC-8 trial population in terms of sex (male, 57.2% vs 57.1%), age (≤70 years, 89.8% vs 89.4%), and other clinical features, as well as pathological characteristics (eTable 1 in the Supplement). In the present study population, MSI phenotype and *KRAS* and *BRAF* V600E mutations were detected in 9.9% (177 of 1791), 33.1% (588 of 1776), and 9.0% (148 of 1643) of cases, respectively (Figure 1).

Table 2. Univariate Cox Proportional Hazards Regression Models for Disease-Free Survival (DFS) and Overall Survival (OS)

Parameter	Patients, No.	DFS			OS		
		Events, No.	HR (95% CI)	P Value	Events, No.	HR (95% CI)	P Value
Treatment arm, FOLFOX + cetuximab vs FOLFOX	1791	472	1.14 (0.95-1.36)	.17	240	1.13 (0.88-1.46)	.34
Male vs female sex	1791	472	1.13 (0.94-1.36)	.20	240	1.19 (0.92-1.54)	.19
Age, ≤70 vs >70 y	1791	472	1.01 (0.75-1.36)	.94	240	0.78 (0.53-1.13)	.19
Tumor grade, G3-G4 vs G1-G2	1768	463	1.46 (1.18-1.80)	<.001	233	1.89 (1.43-2.51)	<.001
Tumor site, distal vs proximal	1762	467	0.93 (0.77-1.12)	.43	237	0.61 (0.48-0.79)	<.001
pT stage	1791	471			239		
pT2 vs pT1			1.22 (0.40-3.75)	.72		0.72 (0.13-3.94)	.71
pT3 vs pT1			2.84 (1.06-7.62)	.04		2.52 (0.62-10.16)	.19
pT4 vs pT1			6.42 (2.38-17.31)	<.001		6.33 (1.56-25.71)	.01
pN stage, pN2 vs pN1	1791	472	2.29 (1.91-2.75)	<.001	240	2.56 (1.98-3.31)	<.001
ECOG PS, 1-2 vs 0	1726	451	1.31 (1.05-1.64)	.02	229	1.70 (1.27-2.28)	<.001
Bowel obstruction and/or perforation, yes vs no	1791	472	1.51 (1.23-1.86)	<.001	240	1.57 (1.18-2.10)	.002
Vascular invasion and/or lymphatic infiltration, yes vs no	1527	406	1.28 (1.03-1.59)	.02	207	1.21 (0.90-1.63)	.21
MMR status, MSS vs MSI	1791	472	1.12 (0.81-1.54)	.49	240	0.79 (0.53-1.17)	.23
Mutated vs wild type							
KRAS status	1776	465	1.41 (1.17-1.69)	<.001	235	1.25 (0.97-1.63)	.09
BRAF status	1643	427	1.07 (0.77-1.49)	.68	219	1.48 (0.97-2.25)	.07
In MSS Patients							
Mutated vs wild type							
KRAS status	1600	425	1.47 (1.21-1.77)	<.001	208	1.37 (1.04-1.80)	.02
BRAF status	1476	388	1.41 (0.97-2.04)	.07	193	1.88 (1.16-3.06)	.01
In MSI Patients							
Mutated vs wild type							
KRAS status	176	40	0.65 (0.25-1.65)	.36	27	0.50 (0.15-1.65)	.25
BRAF status	167	39	0.54 (0.25-1.17)	.12	26	0.67 (0.27-1.67)	.39

Abbreviations: ECOG PS, Eastern Cooperative Oncology Group performance status; FOLFOX, leucovorin, fluorouracil, and oxaliplatin; HR, hazard ratio;

MMR, mismatch repair; MSS, microsatellite stability; MSI, microsatellite instability.

Among the 1791 patients tested for MMR status, all tumors were tested by IHC assay, except for 105 cases that were also tested by MSI assay because of indeterminate IHC results. Among the 177 tumors with MSI phenotype, 130 (73.4%) had lost MLH1 protein expression, 23 (13.0%) MSH2 expression, 6 (3.4%) MSH6 expression, and 12 (6.8%) PMS2 expression. The remaining 6 MSI tumors were considered indeterminate by means of IHC assay but positive by means of MSI testing. As expected, MSI compared with MSS phenotype was significantly associated with proximal tumors, high grade, and female sex (Table 1).^{19-21,26} Mutated vs nonmutated KRAS tumor was significantly associated with proximal site and VELI-positive status, whereas mutated vs nonmutated BRAF tumor was significantly associated with female sex, proximal site, higher N and T stage, higher grade, and VELI-positive status (Table 1). KRAS and BRAF V600E mutations were mutually exclusive except in 4 patients (Table 1). Even if the co-occurrence of KRAS and BRAF V600E mutations is rare in CRC, this event has already been described with a frequency of approximately 0.2%, which is in line with our results.^{27,28} The prevalence of KRAS mutations was higher in patients with MSS tumors (34.9%) than in patients with MSI tumors (17.0%) ($P < .001$).^{7,19} In contrast, BRAF V600E mutation was significantly more frequent in patients with MSI tumors (32.3%) than in those with MSS tumors (6.4%) ($P < .001$)^{7,19} (Table 1).

Prognostic Factors in the Overall Population

With an overall median follow-up of 3.52 years (95% CI, 3.46-3.64 years), higher T and N stage were independently associated with shorter DFS, whereas proximal site, higher N stage, and higher tumor grade were independently associated with shorter OS (Tables 2 and 3). In the biomarker analysis, no interaction was found between treatment (with or without cetuximab) and MMR status in terms of DFS or OS, but an interaction was found between both BRAF V600E and KRAS mutation and MMR status in terms of DFS and OS. Furthermore, no interaction was found between treatment (FOLFOX vs FOLFOX plus cetuximab) and KRAS status in terms of DFS ($P = .82$) and OS ($P = .73$); and the treatment administered significantly influenced neither DFS (HR, 0.88 [95% CI, 0.66-1.16]; $P = .36$) nor OS (HR, 0.98 [95% CI, 0.66-1.45]; $P = .91$) in patients with KRAS-mutated tumors.

The 3-year DFS rates were 77.9% and 73.9% among patients with MSI and MSS tumors, respectively (Figure 2A). In multivariate analysis, MSI phenotype was not significantly associated with DFS (HR, 1.10 [95% CI, 0.73-1.64]; $P = .67$) or OS (HR, 1.02 [95% CI, 0.61-1.69]; $P = .94$) (Table 3).

The 3-year DFS rates were 69.4% vs 77.1% among patients with mutated vs wild-type KRAS tumors (Figure 2B), and 73.8% vs 74.7% among patients with mutated vs wild-type BRAF tumors (Figure 2C). In multivariate analysis, KRAS mutation was

Table 3. Multivariate Cox Proportional Hazards Regression Models for Disease-Free Survival (DFS) and Overall Survival (OS)

Parameter	DFS		OS	
	HR (95% CI)	P Value	HR (95% CI)	P Value
Treatment arm, FOLFOX + cetuximab vs FOLFOX	1.10 (0.89-1.36)	.38	1.03 (0.77-1.40)	.83
Male vs female sex	1.21 (0.97-1.50)	.10	1.28 (0.93-1.74)	.13
Age, ≤70 vs >70 y	0.98 (0.70-1.36)	.88	0.81 (0.53-1.25)	.34
Tumor grade, G3-G4 vs G1-G2	1.26 (0.97-1.64)	.08	1.55 (1.10-2.19)	.01
Tumor site, distal vs proximal	1.05 (0.83-1.33)	.69	0.66 (0.48-0.91)	.01
pT stage				
pT2 vs pT1	0.97 (0.30-3.09)	.95	0.66 (0.12-3.63)	.63
pT3 vs pT1	1.85 (0.69-5.02)	.22	1.37 (0.33-5.63)	.66
pT4 vs pT1	3.66 (1.34-10.01)	.01	2.99 (0.72-12.41)	.13
pN stage, pN2 vs pN1	2.05 (1.65-2.56)	<.001	2.08 (1.51-2.84)	<.001
ECOG PS, 1-2 vs 0	1.20 (0.93-1.55)	.16	1.72 (1.24-2.40)	.001
Bowel obstruction and/or perforation, yes vs no	1.04 (0.80-1.35)	.77	1.02 (0.70-1.49)	.90
Vascular invasion and/or lymphatic infiltration, yes vs no	1.00 (0.79-1.27)	.99	0.93 (0.67-1.30)	.66
MMR status, MSS vs MSI	1.10 (0.73-1.64)	.67	1.02 (0.61-1.69)	.94
Mutated vs wild type				
<i>KRAS</i> status	1.55 (1.23-1.95)	<.001	1.56 (1.12-2.15)	.008
<i>BRAF</i> status	1.22 (0.81-1.85)	.34	1.13 (0.64-2.00)	.66
In MSS Patients				
Mutated vs wild type				
<i>KRAS</i> status	1.64 (1.29-2.08)	<.001	1.71 (1.21-2.41)	.002
<i>BRAF</i> status	1.74 (1.14-2.69)	.01	1.84 (1.01-3.36)	.046
In MSI patients				
Mutated vs wild type				
<i>KRAS</i> status	0.94 (0.32-2.74)	.91	0.90 (0.23-3.45)	.88
<i>BRAF</i> status	0.23 (0.06-0.92)	.04	0.19 (0.03-1.24)	.08

Abbreviations: ECOG PS, Eastern Cooperative Oncology Group performance status; FOLFOX, leucovorin, fluorouracil, and oxaliplatin; HR, hazard ratio; MMR, mismatch repair; MSS, microsatellite stability; MSI, microsatellite instability.

significantly associated with shorter DFS (HR, 1.55 [95% CI, 1.23-1.95]; $P < .001$) and shorter OS (HR, 1.56 [95% CI, 1.12-2.15]; $P = .008$), whereas *BRAF* V600E mutation influenced neither outcome (Tables 2 and 3).

Prognostic Effect of *KRAS* and *BRAF* V600E Mutations in Patients With MSS Tumors

The 3-year DFS rates were 68.7% and 77.1%, respectively, among MSS patients with mutated and wild-type *KRAS* tumors (Figure 3A). In multivariate analysis, MSS patients with mutated vs wild-type *KRAS* tumors had significantly shorter DFS (HR, 1.64 [95% CI, 1.29-2.08]; $P < .001$) and shorter OS (HR, 1.71 [95% CI, 1.21-2.41]; $P = .002$) (Table 3). A similar negative effect was observed for *BRAF* V600E mutation. The 3-year DFS rates were 67.0% and 74.7%, respectively, among MSS patients with mutated and wild-type *BRAF* tumors (Figure 3B). In multivariate analysis, *BRAF* V600E mutation in patients with MSS tumors remained significantly associated with shorter DFS (HR, 1.74 [95% CI, 1.14-2.69]; $P = .01$) and shorter OS (HR, 1.84 [95% CI, 1.01-3.36]; $P = .046$) (Table 3).

Prognostic Effect of *KRAS* and *BRAF* V600E Mutations in Patients With MSI Tumors

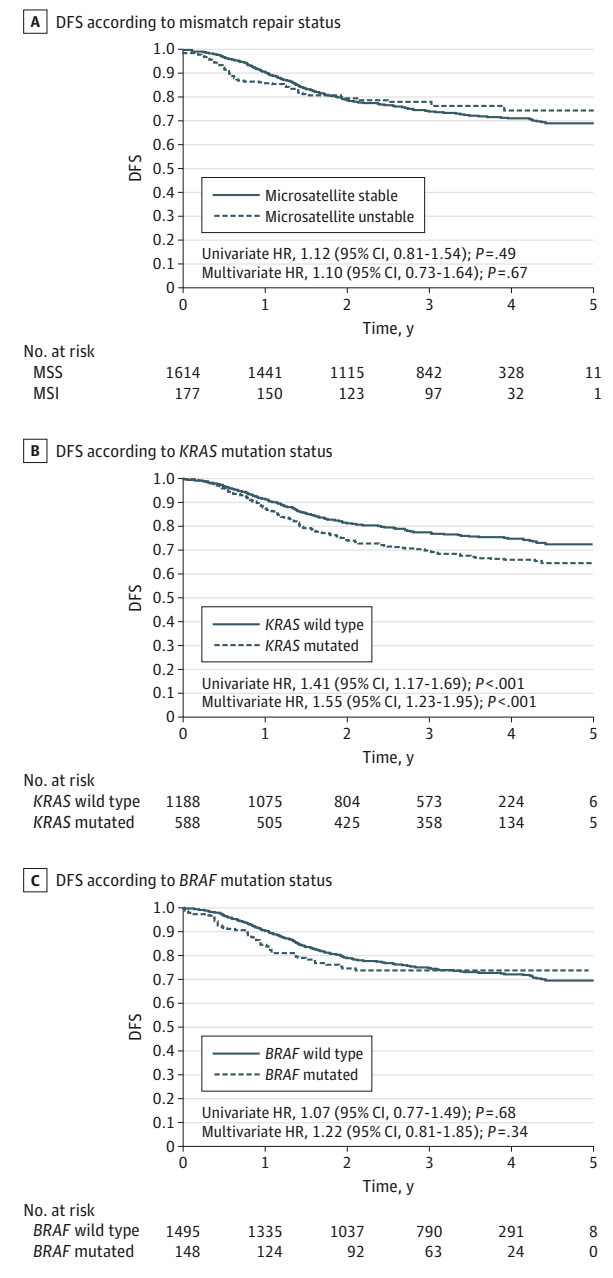
The 3-year DFS rates were 82.8% and 77.5%, respectively, among MSI patients with mutated and wild-type *KRAS* tumors

(Figure 3C). In multivariate analysis, *KRAS* status in patients with MSI tumors was not significantly associated with DFS (HR, 0.94 [95% CI, 0.32-2.74]; $P = .91$) or OS (HR, 0.90 [95% CI, 0.23-3.45]; $P = .88$) (Table 3). As observed in patients with MSS tumors, *BRAF* V600E mutation was again associated with clinical outcome in patients with MSI tumors, but the prognostic effect was in the opposite direction. Indeed, the 3-year DFS rates were 85.2% and 74.3%, respectively, among MSI patients with mutated and wild-type *BRAF* tumors (Figure 3D). In multivariate analysis, MSI tumors harboring *BRAF* V600E mutation were associated with longer DFS (HR, 0.23 [95% CI, 0.06-0.92]; $P = .04$) but not longer OS (HR, 0.19 [95% CI, 0.03-1.24]; $P = .08$) (Table 3).

Discussion

The aim of this study was to determine the prognostic value of MMR, *KRAS*, and *BRAF* status determined on prospectively collected stage III colon cancer specimens from patients receiving FOLFOX with or without cetuximab in a randomized trial of adjuvant therapy. We found that MMR status was not predictive of either DFS or OS. Most previous studies have shown a favorable prognostic effect of the MSI phenotype,^{20,21,26,29-32} but others showed no significant difference in clinical outcome between patients with MSI and MSS

Figure 2. Kaplan-Meier Curves for Disease-Free Survival According to Mismatch Repair, *KRAS*, and *BRAF* Status



HR indicates hazard ratio.

tumors.³³⁻³⁵ This discrepancy might be explained by a lack of adjustment for *BRAF* and *KRAS* status, tumor stage, or the adjuvant treatment regimen. Indeed, although our cohort was composed only of patients with stage III colon cancer, studies showing longer survival among patients with MSI vs MSS tumors generally combined stage II and III tumors, and the favorable prognostic effect seemed to be stronger in stage II disease.^{21,36} In the NCCTG N0147 study, which had a design similar to that of the PETACC-08 trial, analysis of the 2580 patients with stage III colon cancer participating in this trial showed that MMR status had no prognostic value.¹⁹ Further-

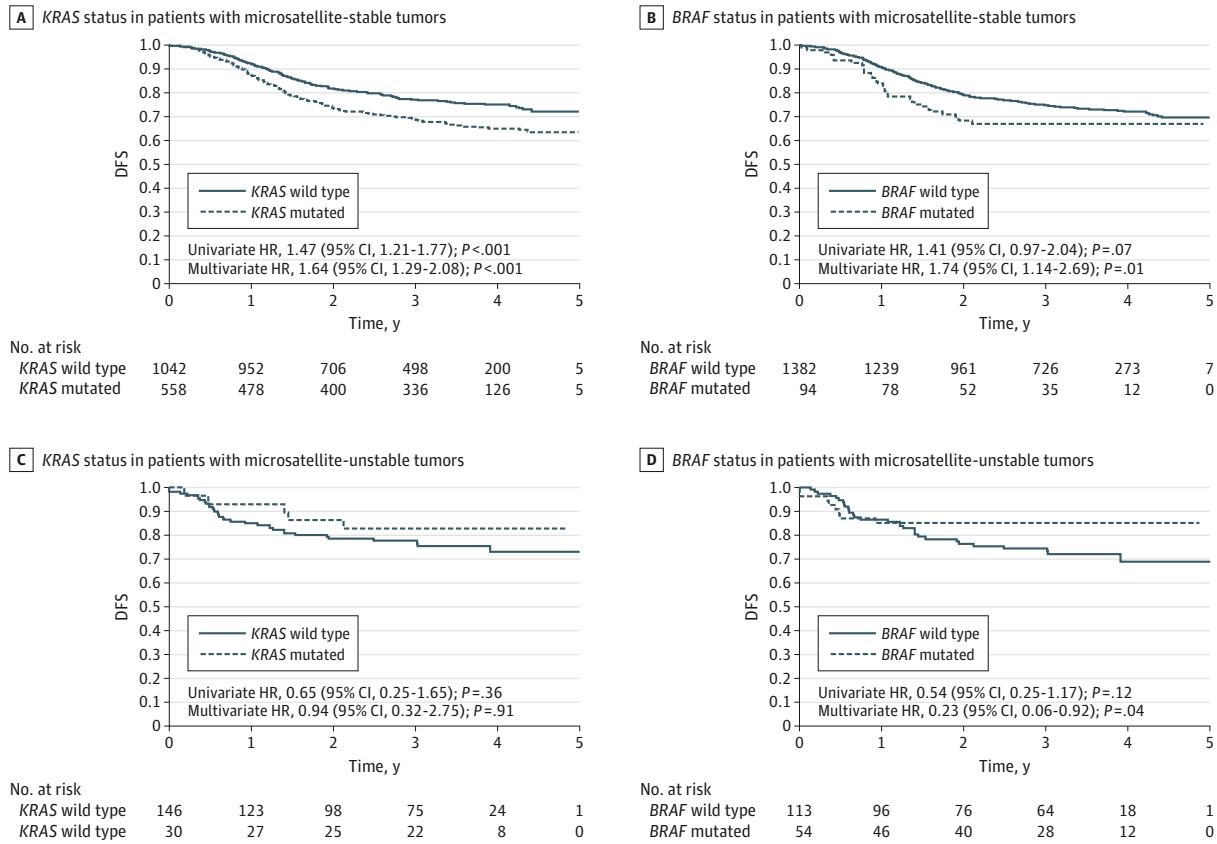
more, in vitro studies have shown that oxaliplatin,³⁷ contrary to fluorouracil,³⁸ is active on CRC cell lines independently of MMR status, suggesting that the clinical effect of MMR status might be attenuated in patients receiving FOLFOX-based adjuvant chemotherapy.

We found that *BRAF* V600E mutation influenced neither DFS nor OS in the overall study population, whereas a negative effect on DFS and OS was observed in the MSS subgroup. Recently, data from the NCCTG N0147 trial showed that *BRAF* V600E mutation was significantly associated with shorter DFS in multivariate analysis (HR, 1.37 [95% CI, 1.08-1.70]; *P* = .009).¹⁹ However, the adverse effect of *BRAF* V600E mutation was limited to patients with MSS tumors after stratification on MMR status.¹⁹ It seems important to adjust the *BRAF* prognostic value to the MMR status to identify more precisely the patients with poor clinical outcomes in stage III colon cancer. Three retrospective analyses of randomized adjuvant trials suggested that *BRAF* V600E mutation was independently associated with shorter OS but not with disease-free or recurrence-free survival^{7,14,18} (eTable 2 in the Supplement). However, when MMR status was taken into account in these studies, the worse prognostic value of *BRAF* V600E mutation was attenuated in patients with MSI tumors. Indeed, MSI/*BRAF* wild-type patients had the best prognosis, whereas the MSS/*BRAF* V600E mutation subgroup had the worst prognosis. Patients with MSS/*BRAF* wild-type or MSI/*BRAF* V600E-mutated tumors had intermediate survival.^{14,18}

Here we found that *BRAF* V600E mutation was significantly associated with longer DFS but not OS in patients with MSI tumors. This suggests that the prognostic effect of *BRAF* V600E mutation in MSI patients treated with FOLFOX with or without cetuximab adjuvant chemotherapy may be indirectly related to the CIMP phenotype. Indeed, there is considerable overlap among tumors characterized as MSI, mutated *BRAF* V600E, and CIMP.⁵ Tumors with *BRAF* V600E mutation and MSI phenotype occur almost exclusively as a consequence of CIMP, associated with methylation of the *MLH1* promoter. The prognostic value of the CIMP phenotype in patients receiving fluorouracil-based adjuvant chemotherapy is controversial.³⁹⁻⁴¹ To our knowledge, only 1 retrospective study has evaluated the prognostic effect of both MMR and CIMP status in patients with stage III colon cancer receiving FOLFOX-based adjuvant chemotherapy, showing that MSI/CIMP-positive tumor status was associated with poorer DFS than MSI/CIMP-negative tumor status.⁴² However, in the MSI/CIMP-positive subgroup analysis, patients with *MLH1* methylation had a longer DFS than those with methylation at other loci.⁴²

We found that *KRAS* mutations were linked to survival defined by a shorter DFS and OS in the overall study population. Stratification on MMR status showed that this effect was restricted to the MSS subgroup whereas no effect of *KRAS* status was seen in the MSI subgroup. Large population-based cohorts and retrospective analyses of randomized adjuvant trials have reported conflicting results concerning the prognostic value of *KRAS* exon 2 mutations^{7,13,43-45} (eTable 2 in the Supplement). Retrospective analyses of 3 randomized adjuvant trials (CKVO 90-11, CALGB 89803, and PETACC-3) failed to demonstrate any association between *KRAS* codon 12 and 13 mutations and

Figure 3. Effect of KRAS and BRAF Status on Disease-Free Survival (DFS) in Patients With Microsatellite-Stable and Microsatellite-Unstable Tumors



HR indicates hazard ratio.

recurrence-free survival or OS in patients with stage II and III colon cancer.^{7,44,45} In contrast, multivariate analysis of data from patients with stage III colon cancer included in the NCCTG N0147 study showed that *KRAS* mutations in either codon 12 or 13 were independently associated with poorer DFS.¹⁵ More recently, data on patients enrolled in the PETACC-8 trial showed that both *KRAS* codon 12 and 13 mutations were related to prognosis in patients with distal tumors only.¹⁶ We report here that *KRAS* mutations were associated with a poor outcome in patients with MSS tumors, which represent approximately 90% of all stage III colon cancer. This is in accordance with our previous report¹⁶ because MSS tumors are more frequently distal, whereas MSI tumors are mainly located in the proximal site. A lack of stratification on MMR tumor status may, at least in part, explain discrepancies concerning the prognostic value of *KRAS* mutation among previously published studies.

In randomized studies including patients with *KRAS*-mutated metastatic CRC, oxaliplatin-based chemotherapy in combination with epidermal growth factor receptor inhibitors (cetuximab and panitumumab) is associated with worse survival than oxaliplatin-based chemotherapy alone,^{46,47} which is not the case for irinotecan-based chemotherapy.⁴⁸ In our study, cetuximab in combination with oxaliplatin-based chemotherapy did not worsen the clinical outcomes of patients with stage III colon cancer with *KRAS*-mutated tumors. Further analysis based on

the complete assessment of *KRAS/NRAS* exons 2, 3, and 4, as well as survival after recurrence and treatments received after recurrence, is needed to better elucidate the real predictive effect of *KRAS* mutations in the adjuvant setting.

Strengths of our study include biomarker analysis in a prospective collection of tumor blocks from patients with stage III colon cancer treated in a randomized trial with the current standard FOLFOX-based adjuvant chemotherapy. The present study population was representative of the entire PETACC-8 population because no statistically significant difference was observed in terms of clinical and pathological characteristics (see eTable 1 in the Supplement). This large study allowed us to analyze the prognostic effect of *BRAF* V600E and *KRAS* mutations according to MMR status. Study limitations include the lack of patients treated with fluorouracil alone, making it difficult to analyze the predictive value of MMR status for the response to oxaliplatin-based adjuvant chemotherapy. The percentages of patients with mutated *KRAS* tumors were lower than expected in the MSI and MSS groups,⁷ following amendment of the PETACC-8 trial eligibility criteria to restrict random assignment to patients with *KRAS* wild-type tumors. We also recognize the inherent limitations related to the lack of assessment of activating hotspot mutations in *KRAS/NRAS* exons 2, 3, and 4 on clinical outcomes of patients with colon cancer treated with FOLFOX with or without cetuximab in the adjuvant setting. In-

deed, recent data from randomized studies demonstrated that patients with metastatic CRC who have *RAS* wild-type tumors derived a significant survival benefit from the addition of epidermal growth factor receptor inhibitors (panitumumab or cetuximab) to chemotherapy, whereas patients with *RAS* tumor mutations did not.^{47,49} Finally, our hypothesis suggesting that CIMP status may play a role in the good prognostic effect of *BRAF* V600E mutation in patients with MSI tumors should be interpreted with caution because of the small number of patients and the lack of CIMP profiling of the tumors. These results need to be confirmed on pooled data from large phase III adjuvant trials using FOLFOX.

Conclusions

This large analysis of patients with stage III colon cancer receiving FOLFOX-based adjuvant chemotherapy shows that MMR status should be taken into account in future prognostic studies involving *KRAS* and *BRAF* V600E mutations. *BRAF* V600E and *KRAS* exon 2 mutations are independently linked to shorter DFS and OS in patients with MSS tumors. In contrast, *KRAS* mutations have no prognostic value in patients with MSI tumors, whereas the *BRAF* V600E mutation could be associated with longer survival.

ARTICLE INFORMATION

Group Information: The PETACC-8 study investigators are listed in the eAppendix in the Supplement.

Accepted for Publication: October 20, 2015.

Published Online: January 14, 2016.
doi:10.1001/jamaoncol.2015.5225.

Author Affiliations: Paris Descartes University, Department of Digestive Oncology, European Georges Pompidou Hospital, Assistance Publique-Hôpitaux de Paris, France (Taieb, Zaanan); Centre de Recherché UMR-S 1147, Médecine Personnalisée, Pharmacogénomique, Optimisation Thérapeutique, Institut National de la Santé et de la Recherche Médicale, Paris, France (Zaanan, Blons, Laurent-Puig); Department of Statistics, Fédération Francophone de Cancérologie Digestive, Dijon, France (Le Malicot); Department of Pathology, Ambroise Paré Hospital, Assistance Publique-Hôpitaux de Paris, Boulogne-Billancourt, France (Julié, Emile); Versailles Saint-Quentin-en-Yvelines University, Boulogne-Billancourt, France (Julié, Emile); Paris Descartes University, Department of Biology, European Georges Pompidou Hospital, Assistance Publique-Hôpitaux de Paris, France (Blons, Laurent-Puig); Department of Oncology, Sainte Catherine Institute, Avignon, France (Mineur); Department of Oncology, Cancérologie de l'Ouest Institute, Nantes, France (Bennouna); Medical Oncology Department, Vall d'Hebron University Hospital and Institute of Oncology, Barcelona, Spain (Taberero); Department of Experimental and Clinical Medicine, University of Florence, Florence, Italy (Mini); First Medical Department, University Hospital Carl Gustav Carus, Dresden, Germany (Folprecht); Department of Gastroenterology, Erasme Hospital University, Brussels, Belgium (Van Laethem); Department of Hepato-Gastroenterology, Dijon University Hospital, Dijon, France (Lepage); Centre de Recherche UMR 866, Lipides, Nutrition, Cancer, Institut National de la Santé et de la Recherche Médicale, Dijon, France (Lepage).

Author Contributions: Dr Taieb and Ms Le Malicot had full access to all of the data in the study and take responsibility for the integrity of the data and the accuracy of the data analysis. Drs Taieb and Zaanan and Ms Le Malicot contributed equally to this work as first authors. Drs Emile and Laurent-Puig contributed equally to this work as senior authors.

Study concept and design: Taieb, Zaanan, Taberero, Mini, Folprecht, Laurent-Puig.

Acquisition, analysis, or interpretation of data: All authors.

Drafting of the manuscript: Taieb, Zaanan, Le Malicot, Julié, Blons, Taberero, Lepage, Laurent-Puig.

Critical revision of the manuscript for important intellectual content: Taieb, Zaanan, Le Malicot, Julié, Mineur, Bennouna, Taberero, Mini, Folprecht, Van Laethem, Emile, Laurent-Puig.

Statistical analysis: Le Malicot, Taberero, Laurent-Puig.

Obtained funding: Taieb, Laurent-Puig.

Administrative, technical, or material support: Taieb, Julié, Blons, Mineur, Bennouna, Taberero, Folprecht, Van Laethem, Lepage, Emile, Laurent-Puig.

Study supervision: Taieb, Zaanan, Laurent-Puig.

Conflict of Interest Disclosures: Dr Taieb has participated in consulting and/or advisory boards for Merck, Sanofi, Roche Genentech, Pfizer, and Amgen. Dr Zaanan has participated in consulting and/or advisory boards for Roche, Merck Serono, Amgen, Sanofi, and Lilly. Dr Julié has received honoraria from Roche and Merck Serono. Dr Bennouna has participated in consulting and/or advisory boards for Roche, Boehringer Ingelheim, Novartis, and Pierre Fabre and has received honoraria from Roche, Boehringer Ingelheim, Novartis, and Pierre Fabre. Dr Taberero has participated in consulting and/or advisory boards for Amgen, ImClone Systems, Lilly, Millenium, Novartis, Roche/Genentech, Sanofi, Celgene, Chugai Pharma, Taiho Pharmaceutical, Boehringer Ingelheim and Merck Serono. Dr Folprecht has participated in consulting and/or advisory boards for Roche, Merck KGaA, Lilly, and Bristol and has received honoraria from Merck KGaA, Lilly, and Bayer and research funding from Merck KGaA. Dr Laurent-Puig has participated in consulting and/or advisory boards for and received honoraria from Sanofi, Merck Serono, Amgen, Roche, Genomic Health, Myriad Genetics, and Pfizer. No other disclosures are reported.

Funding/Support: The study was sponsored by the Fédération Francophone de Cancérologie Digestive (FFCD) with funds from a grant from the Ligue Nationale Contre le Cancer. Merck KGaA and Sanofi supported the study, Merck provided the study cetuximab and financial support for study management, and Sanofi provided financial support for the provision of oxaliplatin to Belgian sites when necessary.

Role of the Funder/Sponsor: The FFCD was responsible for the design and conduct of the study; collection, management, analysis, and interpretation of the data; preparation, review, and approval of the manuscript; and decision to submit

the manuscript for publication. Merck KGaA and Sanofi-Aventis reviewed the manuscript but had no role in the design and conduct of the study; collection, management, analysis, and interpretation of the data; preparation of the manuscript; and decision to submit the manuscript for publication.

Additional Contributions: We thank all participating patients and their families, and the study groups and investigators from the participating countries; we also thank the team from the FFCD data center.

REFERENCES

- Jemal A, Bray F, Center MM, Ferlay J, Ward E, Forman D. Global cancer statistics. *CA Cancer J Clin*. 2011;61(2):69-90.
- Ionov Y, Peinado MA, Malkhosyan S, Shibata D, Perucho M. Ubiquitous somatic mutations in simple repeated sequences reveal a new mechanism for colonic carcinogenesis. *Nature*. 1993;363(6429):558-561.
- Peltomäki P, Lothe RA, Aaltonen LA, et al. Microsatellite instability is associated with tumors that characterize the hereditary non-polyposis colorectal carcinoma syndrome. *Cancer Res*. 1993;53(24):5853-5855.
- Herman JG, Umar A, Polyak K, et al. Incidence and functional consequences of hMLH1 promoter hypermethylation in colorectal carcinoma. *Proc Natl Acad Sci U S A*. 1998;95(12):6870-6875.
- Weisenberger DJ, Siegmund KD, Campan M, et al. CpG island methylator phenotype underlies sporadic microsatellite instability and is tightly associated with *BRAF* mutation in colorectal cancer. *Nat Genet*. 2006;38(7):787-793.
- Domingo E, Niessen RC, Oliveira C, et al. *BRAF*-V600E is not involved in the colorectal tumorigenesis of HNPCC in patients with functional *MLH1* and *MSH2* genes. *Oncogene*. 2005;24(24):3995-3998.
- Roth AD, Tejpar S, Delorenzi M, et al. Prognostic role of *KRAS* and *BRAF* in stage II and III resected colon cancer: results of the translational study on the PETACC-3, EORTC 40993, SAKK 60-00 trial. *J Clin Oncol*. 2010;28(3):466-474.
- Van Cutsem E, Köhne CH, Láng I, et al. Cetuximab plus irinotecan, fluorouracil, and leucovorin as first-line treatment for metastatic colorectal cancer: updated analysis of overall survival according to tumor *KRAS* and *BRAF* mutation status. *J Clin Oncol*. 2011;29(15):2011-2019.

9. Karapetis CS, Khambata-Ford S, Jonker DJ, et al. K-ras mutations and benefit from cetuximab in advanced colorectal cancer. *N Engl J Med*. 2008;359(17):1757-1765.
10. Van Cutsem E, Labianca R, Bodoky G, et al. Randomized phase III trial comparing biweekly infusional fluorouracil/leucovorin alone or with irinotecan in the adjuvant treatment of stage III colon cancer: PETACC-3. *J Clin Oncol*. 2009;27(19):3117-3125.
11. De Roock W, Claes B, Bernasconi D, et al. Effects of KRAS, BRAF, NRAS, and PIK3CA mutations on the efficacy of cetuximab plus chemotherapy in chemotherapy-refractory metastatic colorectal cancer: a retrospective consortium analysis. *Lancet Oncol*. 2010;11(8):753-762.
12. Yokota T, Ura T, Shibata N, et al. BRAF mutation is a powerful prognostic factor in advanced and recurrent colorectal cancer. *Br J Cancer*. 2011;104(5):856-862.
13. Andreyev HJ, Norman AR, Cunningham D, Oates JR, Clarke PA. Kirsten ras mutations in patients with colorectal cancer: the multicenter "RASCAL" study. *J Natl Cancer Inst*. 1998;90(9):675-684.
14. Gavin PG, Colangelo LH, Fumagalli D, et al. Mutation profiling and microsatellite instability in stage II and III colon cancer: an assessment of their prognostic and oxaliplatin predictive value. *Clin Cancer Res*. 2012;18(23):6531-6541.
15. Yoon HH, Tougeron D, Shi Q, et al; Alliance for Clinical Trials in Oncology. KRAS codon 12 and 13 mutations in relation to disease-free survival in BRAF-wild-type stage III colon cancers from an adjuvant chemotherapy trial (N0147 Alliance). *Clin Cancer Res*. 2014;20(11):3033-3043.
16. Blons H, Emile JF, Le Malicot K, et al. Prognostic value of KRAS mutations in stage III colon cancer: post hoc analysis of the PETACC-8 phase III trial dataset. *Ann Oncol*. 2014;25(12):2378-2385.
17. Popovici V, Budinska E, Tejpar S, et al. Identification of a poor-prognosis BRAF-mutant-like population of patients with colon cancer. *J Clin Oncol*. 2012;30(12):1288-1295.
18. Ogino S, Shima K, Meyerhardt JA, et al. Predictive and prognostic roles of BRAF mutation in stage III colon cancer: results from intergroup trial CALGB 89803. *Clin Cancer Res*. 2012;18(3):890-900.
19. Sinicrope FA, Mahoney MR, Smyrk TC, et al. Prognostic impact of deficient DNA mismatch repair in patients with stage III colon cancer from a randomized trial of FOLFOX-based adjuvant chemotherapy. *J Clin Oncol*. 2013;31(29):3664-3672.
20. Ribic CM, Sargent DJ, Moore MJ, et al. Tumor microsatellite-instability status as a predictor of benefit from fluorouracil-based adjuvant chemotherapy for colon cancer. *N Engl J Med*. 2003;349(3):247-257.
21. Sargent DJ, Marsoni S, Monges G, et al. Defective mismatch repair as a predictive marker for lack of efficacy of fluorouracil-based adjuvant therapy in colon cancer. *J Clin Oncol*. 2010;28(20):3219-3226.
22. Taieb J, Tabernero J, Mini E, et al; PETACC-8 Study Investigators. Oxaliplatin, fluorouracil, and leucovorin with or without cetuximab in patients with resected stage III colon cancer (PETACC-8): an open-label, randomised phase 3 trial. *Lancet Oncol*. 2014;15(8):862-873.
23. Zaanan A, Cuilliere-Dartigues P, Guilloux A, et al. Impact of p53 expression and microsatellite instability on stage III colon cancer disease-free survival in patients treated by 5-fluorouracil and leucovorin with or without oxaliplatin. *Ann Oncol*. 2010;21(4):772-780.
24. Umar A, Boland CR, Terdiman JP, et al. Revised Bethesda Guidelines for hereditary nonpolyposis colorectal cancer (Lynch syndrome) and microsatellite instability. *J Natl Cancer Inst*. 2004;96(4):261-268.
25. Blons H, Rouleau E, Charrier N, et al; MOKAECM Collaborative Group. Performance and cost efficiency of KRAS mutation testing for metastatic colorectal cancer in routine diagnosis: the MOKAECM study, a nationwide experience. *PLoS One*. 2013;8(7):e68945.
26. Samowitz WS, Curtin K, Ma KN, et al. Microsatellite instability in sporadic colon cancer is associated with an improved prognosis at the population level. *Cancer Epidemiol Biomarkers Prev*. 2001;10(9):917-923.
27. Sorbye H, Dragomir A, Sundström M, et al. High BRAF mutation frequency and marked survival differences in subgroups according to KRAS/BRAF mutation status and tumor tissue availability in a prospective population-based metastatic colorectal cancer cohort. *PLoS One*. 2015;10(6):e0131046.
28. Janakiraman M, Vakiani E, Zeng Z, et al. Genomic and biological characterization of exon 4 KRAS mutations in human cancer. *Cancer Res*. 2010;70(14):5901-5911.
29. Popat S, Hubner R, Houlston RS. Systematic review of microsatellite instability and colorectal cancer prognosis. *J Clin Oncol*. 2005;23(3):609-618.
30. Lanza G, Gafà R, Santini A, Maestri I, Guerzoni L, Cavazzini L. Immunohistochemical test for MLH1 and MSH2 expression predicts clinical outcome in stage II and III colorectal cancer patients. *J Clin Oncol*. 2006;24(15):2359-2367.
31. Halling KC, French AJ, McDonnell SK, et al. Microsatellite instability and 8p allelic imbalance in stage B2 and C colorectal cancers. *J Natl Cancer Inst*. 1999;91(15):1295-1303.
32. Zaanan A, Fléjou JF, Emile JF, et al. Defective mismatch repair status as a prognostic biomarker of disease-free survival in stage III colon cancer patients treated with adjuvant FOLFOX chemotherapy. *Clin Cancer Res*. 2011;17(23):7470-7478.
33. Barnetson RA, Tenesa A, Farrington SM, et al. Identification and survival of carriers of mutations in DNA mismatch-repair genes in colon cancer. *N Engl J Med*. 2006;354(26):2751-2763.
34. Kim GP, Colangelo LH, Wieand HS, et al; National Cancer Institute. Prognostic and predictive roles of high-degree microsatellite instability in colon cancer: a National Cancer Institute-National Surgical Adjuvant Breast and Bowel Project collaborative study. *J Clin Oncol*. 2007;25(7):767-772.
35. Salahshor S, Kressner U, Fischer H, et al. Microsatellite instability in sporadic colorectal cancer is not an independent prognostic factor. *Br J Cancer*. 1999;81(2):190-193.
36. Roth AD, Delorenzi M, Tejpar S, et al. Integrated analysis of molecular and clinical prognostic factors in stage II/III colon cancer. *J Natl Cancer Inst*. 2012;104(21):1635-1646.
37. Fink D, Zheng H, Nebel S, et al. In vitro and in vivo resistance to cisplatin in cells that have lost DNA mismatch repair. *Cancer Res*. 1997;57(10):1841-1845.
38. Carethers JM, Chauhan DP, Fink D, et al. Mismatch repair proficiency and in vitro response to 5-fluorouracil. *Gastroenterology*. 1999;117(1):123-131.
39. Shen L, Catalano PJ, Benson AB III, O'Dwyer P, Hamilton SR, Issa JP. Association between DNA methylation and shortened survival in patients with advanced colorectal cancer treated with 5-fluorouracil based chemotherapy. *Clin Cancer Res*. 2007;13(20):6093-6098.
40. Van Rijnsoever M, Elsaieh H, Joseph D, McCaul K, Iacopetta B. CpG island methylator phenotype is an independent predictor of survival benefit from 5-fluorouracil in stage III colorectal cancer. *Clin Cancer Res*. 2003;9(8):2898-2903.
41. Jover R, Nguyen TP, Pérez-Carbonell L, et al. 5-Fluorouracil adjuvant chemotherapy does not increase survival in patients with CpG island methylator phenotype colorectal cancer. *Gastroenterology*. 2011;140(4):1174-1181.
42. Han SW, Lee HJ, Bae JM, et al. Methylation and microsatellite status and recurrence following adjuvant FOLFOX in colorectal cancer. *Int J Cancer*. 2013;132(9):2209-2216.
43. Andreyev HJ, Norman AR, Cunningham D, et al. Kirsten ras mutations in patients with colorectal cancer: the "RASCAL II" study. *Br J Cancer*. 2001;85(5):692-696.
44. Westra JL, Schaapveld M, Hollema H, et al. Determination of TP53 mutation is more relevant than microsatellite instability status for the prediction of disease-free survival in adjuvant-treated stage III colon cancer patients. *J Clin Oncol*. 2005;23(24):5635-5643.
45. Ogino S, Meyerhardt JA, Irahara N, et al; Cancer and Leukemia Group B; North Central Cancer Treatment Group; Canadian Cancer Society Research Institute; Southwest Oncology Group. KRAS mutation in stage III colon cancer and clinical outcome following intergroup trial CALGB 89803. *Clin Cancer Res*. 2009;15(23):7322-7329.
46. Bokemeyer C, Bondarenko I, Makhson A, et al. Fluorouracil, leucovorin, and oxaliplatin with and without cetuximab in the first-line treatment of metastatic colorectal cancer. *J Clin Oncol*. 2009;27(5):663-671.
47. Douillard JY, Oliner KS, Siena S, et al. Panitumumab-FOLFOX4 treatment and RAS mutations in colorectal cancer. *N Engl J Med*. 2013;369(11):1023-1034.
48. Van Cutsem E, Köhne CH, Hitre E, et al. Cetuximab and chemotherapy as initial treatment for metastatic colorectal cancer. *N Engl J Med*. 2009;360(14):1408-1417.
49. Van Cutsem E, Lenz HJ, Köhne CH, et al. Fluorouracil, leucovorin, and irinotecan plus cetuximab treatment and RAS mutations in colorectal cancer. *J Clin Oncol*. 2015;33(7):692-700.

Supplementary Online Content

Taieb J, Zaanan A, Le Malicot K, et al. Prognostic effect of *BRAF* and *KRAS* mutations in patients with stage III colon cancer treated with leucovorin, fluorouracil, and oxaliplatin with or without cetuximab : a post hoc analysis of the PETACC8 Trial. *JAMA Oncology*. Published online January 14, 2016. doi:10.1001/jamaoncol.2015.5225.

eAppendix 1. Supplemental data: PETACC-8 study investigators

eTable 1. Clinical and pathological characteristics of the present study population tested for MMR status and the entire PETACC8 trial population

eTable 2. Clinical and pathological characteristics of the present study population tested for MMR status and the entire PETACC8 trial population

This supplementary material has been provided by the authors to give readers additional information about their work.

eAppendix: Supplementary data

PETACC-8 study investigators

Country

Group(s), Coordinator(s)

Principle investigator(s) (Centre)

Austria

Austrian Breast and Colorectal cancer Study Group (ABCSSG), Joseph Thaler

Josef Thaler (Klinikum Kreuzschwestern Wels, Wels); Richard Greil (LKH Salzburg); Johannes Gaenger (BKH Hall in Tirol, Hall in Tirol); Wolfgang Eisterer (University Klinik Innsbruck, Innsbruck); Joerg Tschmelitsch (KH Barmherzige Brüder St. Veit / Glan); Felix Keil (LKH Leoben, Leoben); Hellmut Samonigg (Landeskrankenhaus Graz Medizinische Universitätsklinik, Graz); August Zabernigg (BKH Kufstein, Kufstein); Franz Schmid (LKH Bregenz, Bregenz); Günther Steger (Universitätsklinik für Innere Medizin I, Wein); Robert Steinacher (LKH Wolfsberg, LKH); Johannes Andel (LKH Steyr, Steyr); Björn Jagdt, (a.ö.Krankenhaus d. Barmherz. Schwest. Ried, Ried); Alois Lang (LKH Rankweil, Rankweil), Michael Fridrik (AKH Linz, Linz); Reinhold Függer (A.ö. Krankenhaus d. Elisabethinen Linz); Friedrich Hofbauer (LKH Oberpullendorf, Oberpullendorf); Ewald Woell (KH St. Vinzenz Zams, Zams); Dietmar Geissler (LKH Klagenfurt, Klagenfurt); Alfred Lenauer (KH Wiener Neustadt, Wiener Neustadt); Manfred Prager (A.ö. KH Oberwart, Oberwart)

Belgium

Belgian Group of Digestive Oncology (BGDO), Jean-Luc Van Laethem and Eric Van Cutsem

Geert D'Haens (Imelda Ziekenhuis, Bonheiden); Gauthier Demolin (Clinique St-Joseph, Liège); Joseph Kerger (Cliniques Universitaires de Mont-Godinne U.C.L. Yvoir); Guido Deboever (A. Z. St-Jozef, Oostende); Gilbert Ghillebert (Heilig Hart Ziekenhuis, Roeselare); Marc Polus (C. H. U. Sart-Tilman, Liège); Eric Van Cutsem (University Hospitals, Leuven); Hassan Rezaie Kalantari (C. H. Peltzer-La Tourelle, Verviers); Thierry Delaunoit (Centre Hospitalier de Jolimont-Lobbes, La Louvière); Jean Charles Goeminne (Clinique et Maternité Sainte-Elisabeth, Namur); Marc Peeters (Universitair Ziekenhuis Gent, Gent); Philippe Vergauwe (AZ Groeninge-Campus Kennedylaan, Kortrijk); Ghislain Houbiers (Centre médical de L'Avenue, Liege); Yves Humblet (Cliniques Universitaires Saint-Luc, Brussels); Jos Janssens (St-Elisabeth Ziekenhuis, Turnhout); Dirk Schrijvers (ZNA Middelheim, Antwerpen); Erik Vanderstraeten (AZ Maria Middelaars, Gent); Jean-Luc Van Laethem (ULB Hôpital Erasme, Brussels); Jan Vermorken (UZ Antwerpen, Edegem); Daniel Van Daele (Clinique Notre-Dame de Grâce, Gosselies); Michel Ferrante (AZ Sint-Maarten, Mechelen.); Frederic Forget (Centre Hospitalier de l'Ardenne, Libramont); Alain Hendlisz (Jules Bordetinstituut, Brussels)

Denmark

Lone Nørgård Petersen

Mette Yilmaz (Aalborg Sygehus-Afsnit Syd, Aalborg); Svend Erik Nielsen (Hillerød Hospital, Hillerød); Lene Vestermark (Odense Universitets Hospital, Odense); Jim Larsen (Roskilde Amtssygehus, Roskilde)

France

Fédération Francophone de Cancérologie Digestive (FFCD), Jean François Seitz; Fédération Nationale des Centres de Lutte Contre le Cancer (UNICANCER), Marc Ychou; Fédération Nationale des Centres de Lutte Contre le Cancer Association Européenne de Recherche en Oncologie (AERO), Ayman Zawadi

Mohamed-Ayman Zawadi (Centre Hospitalier Les Oudairies, La Roche sur Yon); Olivier Bouche (CHU de Reims, Hopital Robert Debre, Reims); Laurent Mineur (Institut Sainte Catherine, Avignon); Jaafar Bennouna-Louridi (CRLCC René Gauducheau, St Herblain); Louis Marie Dourthe, (Clinique Sainte Anne, Strasbourg); Marc Ychou (Centre Regional Val d'Aurelle Paul Lamarque, Montpellier); Eveline Boucher (CRLC Eugène Marquis, Rennes); Julien Taieb (Hôpital Européen Georges Pompidou, Paris); Denis Pezet (CHU Estaing, Clermont Ferrand); Françoise Desseigne (Centre Leon Berard, Lyon); Michel Ducreux (Institut Gustave Roussy Villejuif); Patrick Texereau (Hopital Layne, Mont-de-Marsan); Laurent Miglianico (Centre Hospitalier Privé Saint- Grégoire (Rennes), Saint-Grégoire); Philippe Rougier (Hôpital Européen Georges Pompidou, Paris); Serge Fratte (Centre Hospitalier de Belfort-Montbeliard, Belfort); Charles-Briac Levache (Polyclinique Francheville, Perigueux); Yacine Merrouche, (Institut de Cancerologie de la Loire, Saint-Priest-En-Jarez); Stephen Ellis (Clinique Saint Pierre, Perpignan); Christophe Locher (CH Meaux, Meaux); Jean-Francois Ramee (Centre Catherine de Sienne, Nantes); Claire Garnier (UMGEC-Institut Daniel Hollard, Grenoble); Frederic Viret (Institut Paoli Calmettes, Marseille); Bruno Chauffert (Centre Georges François Leclerc, Dijon); Isabelle Cojean-Zelek (Hopital Croix Saint Simon, Paris); Pierre Michel (Hopital Charles Nicolle, Rouen); Cedric Lecaille (Polyclinique Bordeaux Nord Aquitaine, Bordeaux); Christian Borel (CLCC Paul Strauss, Strasbourg); Jean-Francois Seitz (CHU de la Timone, Marseille); Denis Smith (Groupe Hospitalier Saint-Andre, Bordeaux); Catherine Lombard-Bohas (Hospices Civils de Lyon, Hôpital Edouard Herriot, Lyon); Thierry Andre (Groupe Hospitalier Pitie-Salpetriere, Paris); Jean-Marc Gornet, (Hopital Saint Louis, Paris); Francine Fein (CHU de Besancon, Hopital Jean Minjoz, Besançon); Marie-Aude Coulon-Sfairi (Centre Hospitalier du Mans, Le Mans); Marie-Christine Kaminsky (Centre Alexis Vautrin Brabois, Vandoeuvre les Nancy); Jean-Paul Lagasse (CHR d'Orléans La Source, Orléans); Dominique Luet (CRLCC Paul Papin, Angiers); Pierre-Luc Etienne (Clinique Armoricaine de Radiologie, Saint-Brieux); Mohamed Gasmî (Hopital Nord de Marseille, Marseille); Andre Vanoli (Clinique Ste-Marie, Chalon Sur Saone); Suzanne Nguyen (Centre Hospitalier de Beauvais, Beauvais); Thomas Aparicio (Hôpital Bichat, Paris); Hervé Perrier (Hopital Saint Joseph, Marseille); Noel Stremsoerfer (Hopital Pierre Oudot, Bourgoin-Jallieux); Philippe Laplaige (Clinique Saint Côme, La Chaussée St Victor); Dominique Arsene (CHU de Caen, Caen); Dominique Auby (Hôpital Robert Boulin, Libourne); Laurent Bedenne (Hopital du Bocage, Dijon); Romain Coriat (Hopital Cochin, Paris); Bernard Denis (Hopital Pasteur, Colmar); Patrick Geoffroy (Clinique Saint-Vincent, Epernay); Gilles Piot (Clinique des Ormeaux, Le Havre); Yves Becouarn (CHU de Bordeaux, Bordeaux); Gilbert Bordes (Centre Hospitalier de Digne Les Bains, Digne Les Bains); Gael Deplanque (Hopital Saint Joseph, Paris); Olivier Dupuis (Clinique Victor Hugo, Le Mans); Frederic Fruge (CHU Poitiers-Hôpital la Milétrie, Poitiers); Rosine Guimbaud (Hopital Purpan, Toulouse); Thierry Lecomte (Hopital Trousseau - CHU de Tours, Tours); Gérard Lledo (Hopital Prive Jean Mermoz, Lyon); Iradej Sobhani (Hôpital Henri Mondor (Gastro-Entérologie), Créteil); Amani Asnacios (Hopital Antoine Beclere, Clamart); Ahmed Azzedine (Boulat, Michel, Avignon); Christophe Desauw (Hopital Saint Vincent de Paul-GHICL Lille, Lille); Marie-Pierre Galais (Centre François Baclesse, Caen); Dany Gargot (Centre Hospitalier de Blois, Blois); You-Heng Lam (Hopital de Cholet, Cholet); Abakar Abakar-Mahamat (Hopital l'Archet II, Nice); Jean-Francois Berdah (Clinique Sainte Marguerite, Hyères); Sylviane Catteau (Hopital Duchenne, Boulogne sur Mer); Marie-Christine Clavero-Fabri (Clinique Hartman, Levallois Perret); Jean-Francois Codoul (Hopital de Draguignan, Draguignan); Jean-Louis Legoux (Hôpital Haut Levêque, Pessac); Denis Goldfain (Centre Hospitalier General de Dreux, Dreux); Pierre Guichard (Clinique des quatre Pavillons, Lormont); Denis Pere Verge (Hôpital de la Croix Rousse (Gastroentérologie), Lyon); Jocelyne Provencal (Centre Hospitalier d'Annecy, Pringy); Bruno Vedrenne (Hopital E. Muller, Mulhouse); Catherine Brezault-Bonnet (Hopital de Rambouillet, Rambouillet); Denis Cleau (Centre Hospitalier Intercommunal de Vesoul, Vesoul); Jean-Paul Desir (Clinique Pole Sante Republique, Clermont-Ferrand); David Fallik (Polyclinic Jeanne d'Arc Gien); Bruno Garcia (Clinique de Courlancy, Reims); Marie-Hélène Gaspard (Clinique Claude Bernard, Albi); Dominique Genet (Centre de Cancerologie Chenieux, Limoges); Johannes Hartwig (Infirmierie Protestante de Lyon, Caluire et Cuire.); Yves Krummel (Centre Hospitalier Selestat, Selestat); Tamara Matysiak Budnik (CH de Nantes Hotel Dieu, Nantes); Vanessa Palascak-Juif (Hopital de Haute pierre, Strasbourg); Harizo Randrianarivelo (Centre Frederic Joliot, Rouen); Yves Rinaldi (Clinique Clairval, Marseille); Albert Aleba

(Centre Hospitalier de Niort, Hopital Georges Renon, Niort); Ariane Darut-Jouve (Centre d'oncologie et Radiotherapie, Dijon); Aimery de Gramont (Hopital Saint Antoine, Paris); Herve Hamon (Centre Hospitalier de Valence, Valence); Frederic Wendehenne (Clinique Charcot, Sainte-Foy-les-Lyon)

Germany

Arbeitsgemeinschaft Internistische Onkologie (AIO), Gunnar Folprecht

Axel Matzdorff (Caritasklinik St. Theresia, Saarbruecken); Michael Konrad Stahl (Kliniken Essen-Mitte-PS, Essen); Wolfgang Schepp (KKH Muenchen Bogenhausen, Muenchen); Martin Burk (Klinikum der Stadt Hanau, Hanau); Lothar Mueller (Onkologische Schwerpunktpraxis, Leer); Gunnar Folprecht (Universitaetsklinikum Carl Gustav Carus, Dresden); Michael Geissler (Staedtische Kliniken Esslingen, Esslingen); Luisa Mantovani-Loeffler (Staedtisches Klinikum St. Georg Leipzig, Leipzig); Thomas Hoehler (Prosper-Hospital, Recklinghausen); Walter Asperger (Krankenhaus St. Elisabeth und St. Barbara, Halle); Hendrik Kroening (Gemeinschaftspraxis, Magdeburg); Ludwig Fischer von Weikersthal (MVZ Gesundheitszentrum St. Marien GmbH, Amberg); Stefan Fuxius (Onkologische Praxis, Heidelberg); Matthias Groschek (Haematologisch-Onkologische Praxis Wuerselen, Wuerselen); Johannes Meiler, Tanja Trarbach (Universitaetsklinikum Essen, Essen); Jacqueline Rauh (Gemeinschaftspraxis Ardeystrasse, Witten); Nicolas Ziegenhagen, Albrecht Kretzschmar (Helios-Kliniken Berlin, Berlin); Ullrich Graeven (Kliniken Maria Hilf GmbH, Moenchengladbach); Arnd Nusch (Onkologische Praxis, Velbert); Goetz von Wichert (Universitaetsklinikum, Ulm); Ralf-Dieter Hofheinz (Klinikum der Stadt Mannheim, Mannheim); Gerhard Kleber (Ostalb-Klinikum Aalen, Aalen); Karl-Heinz Schmidt (Johanniter-Krankenhaus Rheinhausen, Duisberg); Ursula Vehling-Kaiser (Gemeinschaftspraxis, Landshut); Claudia Baum, Jochen Schuette (Marien Hospital Duesseldorf GmbH, Duesseldorf); Georg Martin Haag (Universitaetsklinikum Heidelberg, Heidelberg); Wilhelm Holtkamp (Ammerland-Klinik GmbH, Westerstede); Jochen Potenberg (Evangelisches Waldkrankenhaus, Berlin); Tobias Reiber (Praxis fuer Haematologie/Onkologie, Freiberg); Georg Schliesser (Praxis fuer Haematologie und Onkologie, Giessen); Hans-Joachim Schmoll (Martin-Luther-Universitaet Halle-Wittenberg, Halle); Wolfgang Schneider-Kappus (Arztpraxis, Ulm); Wolfgang Abenhardt (Onkologie Praxis im Elisenhof, Muenchen); Claudio Denzlinger (Marienhospital Stuttgart, Stuttgart); Jan Henning, Bartscht Marxsen (Universitaetsklinikum Schleswig-Holstein, Luebeck); Hans Guenter Derigs (Staedtische Kliniken Frankfurt-Hoechst, Frankfurt); Helmut Lambertz (Klinikum Garmisch-Partenkirchen, Garmisch-Partenkirchen); Ingulf Becker-Boost (MVZ Duisburg Sued GmbH, Duisburg); Karel Caca (Klinikum Ludwigsburg, Ludwigsburg); Christian Constantin (Kliniken Lippe-Lemgo GmbH, Lemgo); Thomas Decker (Gemeinschaftspraxis, Ravensburg); Henning Eschenburg (Internistische Gemeinschaftspraxis, Guestrouw); Sigrun Gabius (Gemeinschaftspraxis, Rosenheim); Holger Hebart (Klinikum Schwaebisch Gmuend-Staufferklinik, Mutlangen); Albrecht Hoffmeister (Universitaetsklinikum Leipzig, Leipzig); Heinz-August Horst (Universitaetsklinikum Schleswig-Holstein-Campus Kiel, Kiel); Stephan Kremers (Caritas-Krankenhaus, Lebach); Malte Leithaeuser (Universitaetsmedizin Rostock, Rostock); Sebastian Mueller (Ambulantes Onkologie Zentrum, Ansbach); Siegfried Wagner (Klinikum Deggendorf, Deggendorf); Severin Daum (Charité Universitaetsmedizin Berlin-Campus Charité Mitte, Berlin); Frank Schlegel (St. Antonius-Hospital, Eschweiler); Martina Stauch (Onkologische Schwerpunktpraxis, Kronach); Volker Heinemann (Klinikum der Ludwig-Maximilians-Universitaet, Muenchen)

Italy

Gruppo Italiano per lo Studio dei Carcinomi dell'Apparato Digerente (GISCAD), Roberto Labianca; Gruppo Oncologico dell'Italia Meridionale (GOIM), Giuseppe Colucci; Istituto Oncologico Romagnolo (IOR), Dino Amadori; Gruppo Cooperativo Chirurgico Italiano (GOCCI), Enrico Mini; Gruppo Oncologico Nord Ovest (GONO), Alfredo Falcone; Gruppo Oncologico Italiano di Ricerca Clinica (GOIRC), Corrado Boni

Evaristo Maiello (IRCCS Casa Sollievo della Sofferenza, San Giovanni Rotondo); Luciano Latini (Ospedale di Macerata, Macerata); Alberto Zaniboni (Fondazione Poliambulanza Istituto Ospedaliero, Brescia); Dino Amadori (Istituto Scientifico Romagnolo per lo Studio e la Cura dei Tumori, Meldola); Giuseppe Aprile (Az. Policlinico Universitario di Udine, Udine); Sandro Barni (Azienda Ospedaliera Treviglio-Caravaggio, Treviglio); Rodolfo Mattioli (Ospedale Santa Croce ASUR 3, Fano); Andrea Martoni, Francesca di Fabio (Azienda Ospedaliera Universitaria Policlinico Sant'Orsola Ma, Bologna); Rodolfo Passalacqua (Azienda Ospedaliera Istituti Ospitalieri di Cremona, Cremona); Mario Nicolini, Enzo Pasquini (Ospedale Cervesi, Cattolica); Carla Rabbi, Enrico Aitini (Azienda Ospedaliera Carlo Poma, Mantova); Alberto Ravaioli, Emiliano Tamburini (Ospedale degli Infermi, Rimini); Carlo Barone (Policlinico Universitario Agostino Gemelli, Roma); Guido Biasco (Ospedale Marcello Malpighi Policlinico Sant'Orsola, Bologna); Stefano Tamberi, Angelo Gambi (Ospedale Degli Infermi, Faenza); Claudio Verusio (Ospedale di Saronno, Saronno); Marina Marzola, Giorgio Lelli (Azienda Ospedaliera Universitaria Arcispedale Sant'Anna, Cona (Ferrara)); Corrado Boni (A.O. Arcispedale Santa Maria Nuova, Reggio Emilia); Stefano Cascinu (Azienda Ospedaliero Universitaria Ospedali Riuniti, Ancona); Paolo Bidoli, Massimo Vaghi (Azienda Ospedaliera San Gerardo, Monza); Giorgio Cruciani (Ospedale Umberto I, Luggo); Francesco Di Costanzo (Azienda Ospedaliera Universitaria Careggi, Firenze); Alberto Sobrero (Azienda Ospedaliera San Martino, Genoa); Enrico Mini, Stefania Nobili (A.O. Universitaria Careggi, Firenze); Roberto Petrioli (A.O.U. Senese Policlinico Santa Maria alle Scotte, Siena); Massimo Aglietta (Istituto per la Ricerca e la Cura del Cancro, Candiolo); Oscar Alabiso (Ospedale Maggiore della Carità, Novara); Federico Capuzzo, Alfredo Falcone (Presidio Ospedaliero di Livorno, Livorno); Domenico Cristì Corsi (Ospedale "S. Giov. Calibita" Fatebenefratelli, Roma); Roberto Labianca (Ospedali Riuniti di Bergamo, Bergamo); Stefania Salvagni (Azienda Ospedaliera di Parma, Parma); Silvana Chiara (Istituto nazionale per la ricerca sul cancro, Genova) Libero Ciuffreda (A.O. San Giovanni Battista, Torino); Francesco Ferrà (Azienda Ospedaliera San Vincenzo, Taormina); Francesco Giuliani (Istituto Oncologico Giovanni Paolo II IRCCS, Bari); Sara Lonardi (IOV-Istituto Oncologico Veneto IRCCS, Padova); Nicola Gebbia, Antonio Russo (Azienda Ospedaliero Universitaria Policlinico Paolo Giaccone, Palermo); Giovanni Mantovani, Elena Massa (Università di Cagliari-Presidio Policlinico Monserrato, Monserrato)

Portugal

Grupo Cooperativo do Cancro Digestivo da Associação Portuguesa de Investigação Oncológica (GCCD, APIO), Evaristo Sanches

Evaristo Sanches (Instituto Português de Oncologia do Porto Francisco Gentil, Porto); Juan Carlos Mellidez (Hospital Distrital de Aveiro, Aveiro); Pedro Santos (Hospital São Sebastião, EPE, Santa Maria da Feira); Joao Freire (Instituto Portugues de Oncologia, Lison); Cristina Sarmento (Hospital de Sao Joao, Porto); Luis Costa (Hospital de Santa Maria, Lisbon); Antonio Moreira Pinto (Hospital Geral de Santo Antonio, Porto); Sergio Barroso (Hospital Distrital de Beja, Beja); Jorge Espirito Santo (Hospital do Barreiro, Barreiro); Fátima Guedes (Hospital Distrital Figueira da Foz, EPE, Figueira da Foz); Amélia Monteiro (Hospital São Teotónio, EPE, Viseu); Anabela Sa (Hospitais da Universidade de Coimbra, Coimbra); Irene Furtado (Hospital Distrital de Faro, Faro)

Spain

Grupo Español para el Tratamiento de los Tumores Digestivos (TTD), Josep Taberero

Ramon Salazar (ICO l'Hospitalet Hospital Duran i Reynals, Barcelona); Enrique Aranda Aguilar (Hospital Reina Sofia, Cordoba); Fernando Rivera Herrero (Hospital Universitario Marques de Valdecilla, Santander); Josep Taberero (Hospital. Vall d'Hebron, Barcelona); Javier Sastre Valera (Hospital Clinico San Carlos, Madrid); Manuel Valladares Ayerbes (Complejo Hospitalario Universitario A Coruña, A Coruña); Jaime Feliu Batlle (Hospital Universitario La Paz, Madrid); Silvia Gil (Hospital Carlos Haya, Malaga); Albert Abad Esteve (ICO Badalona-Hospital Germans Trias i Pujol, Barcelona); Carlos Garcia-Giron (Hospital Universitario de Burgos, Burgos); Guillermo Lopez Vivanco (Hospital de Cruces, Vizcaya); Antonia Salud Salvia (Hospital Universitario de Lleida Arnau de Vilanova, Lleida); Vicente Alonso Orduña (Hospital Miguel Servet, Zaragoza); Ruth Vera Garcia (Complejo Hospitalario de Navarra, Pamplona); Javier Gallego (HGU de Elche, Elche-Alicante); Bartomeu Massuti Sureda (Hospital General Universitario de Alicante, Alicante); Jordi Remon (Hospital de Mataro, Barcelona); Maria Jose Safont Aguilera (Hospital General Universitario de Valencia, Valencia); Luis Cirera Noguera (Hospital Mutua de Terrassa, Barcelona); Bernado Queralt Merino (Hospital Universitari de Girona Dr Josep Trueta, Girona); Cristina Gravalos Castro (Hospital 12 de Octubre, Madrid); Purificacion Martinez de Prado (Hospital de Basurto, Bilbao); Carlos Pijaume Pericay (Consorti Hospitalari Parc Tauli, Barcelona); Manuel Constenla Figueiras (Hospital Provincial de Pontevedra, Pontevedra); Inmaculada Guasch Jordan (Hospital Sant Joan de Deu de Manresa, Manresa); Maria Jose Gome Reina (Hospital del Mar, Cadiz); Amelia Lopez-Ladron Garcia (Hospital El Tomillar-Ntra Sra de Valme, Sevilla); Antonio Arrivi Garcia-Ramos (Fundacion Hospital Son Llatzer, Palma Mallorca); Andres Cervantes (Hospital Clinico Universitario de Valencia, Valencia); Carlos Fernandez Martos (Instituto Valenciano de Oncologia, Valencia); Eugenio Marcuello Gaspar (Hospital de la Santa Creu i Sant Pau, Barcelona); Ines Cabezas Montero (Hospital Universitario Sant Joan de Reus, Tarragona); Pilar Escudero Emperador (Hospital Clinico Universitario Lozano Blesa, Zaragoza); Ana Leon Carbonero (Fundacion Jimenez Diaz, Madrid);

Manuel Gallen Castillo (Hospital del Mar, Barcelona); Teresa Garcia Garcia (Hospital Morales Meseguer, Murcia); Jose Garcia Lopez (Hospital Universitario Ramón y Cajal, Madrid); Encarnacion Gonzalez Flores (Hospital Virgen de las Nieves Ruiz de Alda, Granada); Monica Guillot Morales (Hospital Son Espases, Palma de Mallorca); Marta Llanos Muñoz (Hospital Universitario de Canarias, Santa Cruz de Tenerife); Ana López Martín (Hospital Severo Ochoa.); Joan Maurel (Hospital Clinic i Provincial, Barcelona); Juan Carlos Camara (Fundacion Hospital Alcorcon, Madrid); Rosario Dueñas Garcia (Hospital Ciudad de Jaen, Jaen); Mercedes Salgado (Complejo Hospitalario Ourense, Ourense); Isabel Hernandez Busquier (Hospital Provincial Castellon, Castellon); Teresa Checa Ruiz (Instituto de Oncologia Corachan, Barcelona); Adelaida Lacasta Muñoa (Hospital. de Donostia, San Sebastian); Miquel Nogue Aliguer (Hospital General de Vic, Vic); Amalia Velasco Ortiz de Taranco (Hospital Universitario de La Princesa, Madrid); Miguel Mendez Ureña (Hospital General de Mostoles, Mostoles); Ferran Losa Gaspá (Consorci Sanitari Creu Roja, Barcelona); Jose Juan Ponce (Hospital Virgen de los Lirios, Alicante); Carlos Bosch Roig (Hospital Universitario. Dr. Peset, Valencia); Pedro Valero Jimenez (Clínica Infanta Luisa, Sevilla); Antonio Galan Brotons (Hospital Sagunto, Sagunto); Santiago Albiol Rodriguez (Hospital Espiritu Santo, Barcelona); Jose Ales Martinez (Hospital Ruber Internacional de Madrid, Madrid); Liliana Canosa Ruiz (Hospital Torrecardenas, Almeria); Margarita Centelles Ruiz (Hospital Sagrat Cor, Barcelona)

United Kingdom

John Allen Bridgewater

John Bridgewater (North Middlesex University Hospital NHS Trust, London); Rob Glynne-Jones (Centre for Cancer Treatment, Mount Vernon Hospital, Northwood, London); Saad Tahir (Broomfield Hospital, Chelmsford); Tamas Hickish (Poole Hospital NHS Trust, Poole and Bournemouth Hospital, Bournemouth); Jim Cassidy (Beatson West of Scotland Cancer Centre, Glasgow); Leslie Samuel (Aberdeen Royal Infirmary, Aberdeen)

eTable 1: Clinical and pathological characteristics of the present study population tested for MMR status and the entire PETACC8 trial population

	Present study population tested for MMR status (N=1791)	Entire PETACC8 population (N=2559)	p-value
Treatment arm (n)	1791	2559	0.95
Folfox	897 (50.1%)	1279 (50.0%)	.
Folfox+Cetuximab	894 (49.9%)	1280 (50.0%)	.
Gender (n)	1791	2559	0.95
Male	1025 (57.2%)	1462 (57.1%)	.
Female	766 (42.8%)	1097 (42.9%)	.
Age (n)	1791	2559	
Age ≤ 70 years	1609 (89.8%)	2289 (89.4%)	0.68
Median age (range)	60.0 (19.9-75.0)	60.0 (19.9-75.0)	0.99
WHO Performance Status (n)	1726	1969	0.93
0	1405 (81.4%)	1611 (81.8%)	
1	315 (18.3%)	352 (17.9%)	
2 - 3	6 (0.3%)	6 (0.3%)	
Tumor site (n)	1762	2520	0.67
Distal	1074 (61.0%)	1552 (61.6%)	.
Proximal	688 (39.0%)	968 (38.4%)	.
Tumor Grade (n)	1768	2526	0.90
G1-G2	1435 (81.2%)	2054 (81.3%)	
G3-G4	333 (18.8%)	472 (18.7%)	
Lymph nodes status (n)	1791	2559	0.99
pN1	1117 (62.4%)	1597 (62.4%)	.
pN2	674 (37.6%)	962 (37.6%)	.

	Present study population tested for MMR status	Entire PETACC8 population	p-value
	(N=1791)	(N=2559)	
T stage (n)	1791	2559	
pT1/pT2/pTis	168 (9.4%)	267 (10.4%)	0.60
pT3	1246 (69.6%)	1768 (69.1%)	.
pT4	376 (21.0%)	521 (20.4%)	
pTx	1 (0.1%)	3 (0.1%)	.
Bowel obstruction and/or perforation (n)	1791	2559	0.81
Yes	342 (19.1%)	496 (19.4%)	.
No	1449 (80.9%)	2063 (80.6%)	.
VELI (n)	1791	2559	0.89
Yes	1007 (56.2%)	1442 (56.4%)	.
No	520 (29.0%)	729 (28.5%)	.
KRAS (n)	1776	1935	0.93
Wild type	1188 (66.9%)	1297 (67.0%)	.
Mutated	588 (33.1%)	638 (33.0%)	.
BRAF (n)	1643	1783	0.98
Wild type	1495 (91.0%)	1622 (91.0%)	.
Mutated	148 (9.0%)	161 (9.0%)	.

eTable 2. Prognostic value of MMR, KRAS exon 2 and BRAFV600E in stage III colon cancer patients included in adjuvant randomized controlled trials

Randomized adjuvant trials	No. of Patients	Tumor Stage	Frequency of mutations	DFS *			OS		
				HR adjusted	95% CI	p	HR adjusted	95% CI	p
MMR status (MSI vs MSS)									
Pooled analysis of 5FU-adjuvant trials ²¹	515 (surgery group)	II + III	15.3%	0.51	0.29 - 0.89	0.009	0.47	0.26 - 0.83	0.004
	512 (5FU group)	II + III	16.8%	0.79	0.49 - 1.25	0.30	0.78	0.49 - 1.24	0.28
PETACC3 ⁷	912	III	11.4%	0.59	0.38 - 0.91	0.02	0.48	0.28 - 0.81	0.006
CALGB 89803 ¹⁸	505	III	15.2%	0.57	0.37 - 0.88	--	0.61	0.38 - 0.97	--
NSABP-C07 and C08 ¹⁴	1796	II + III	11.5%	0.48	0.33 - 0.70	<0.001	0.64	0.46 - 0.89	0.008
N0147 ¹⁹	2580	III	12.2%	1.04	0.83 - 1.29	0.75	--	--	--
KRAS exon 2 (mutant vs wild type)									
PETACC3 ⁷	1299	III	37.5%	1.21	0.95 - 1.54	0.12	1.28	0.97 - 1.71	0.09
in MSS subgroup				1.29	1.01 - 1.66	0.04	1.33	0.99 - 1.79	0.055
CALGB 89803 ⁴⁵	506	III	24.3% (codon 12)	1.09	0.78 - 1.54	--	0.98	0.66 - 1.47	--
			10.5% (codon 13)	0.82	0.50 - 1.36	--	0.80	0.46 - 1.42	--
NSABP-C07 and C08 ¹⁴	2081	II + III	38.1%	1.12	0.94 - 1.32	0.21	1.09	0.92 - 1.29	0.33
N0147 ¹⁹	2579	III	27.8%	1.44	1.21 - 1.70	<0.001	--	--	--
in MSS subgroup				1.45	1.22 - 1.73	<0.001			
in MSI subgroup				0.91	0.40 - 2.10	0.83			
BRAF^{V600E} (mutant vs wild type)									

PETACC3 ⁷	829	III	7.9%	1.23	0.79 - 1.92	0.35	1.67	1.04 - 2.68	0.035
in MSS subgroup				1.23	0.74 - 2.04	0.42	1.62	0.96 - 2.74	0.07
CALGB 89803 ¹⁸	506	III	14.8%	1.48	0.96 - 2.27	--	1.66	1.05 - 2.63	--
NSABP-C07 and C08 ¹⁴	2226	II + III	14.2%	1.02	0.82 - 1.28	0.86	1.46	1.20 - 1.79	<0.001
N0147 ¹⁹	2515	III	13.7%	1.37	1.08 - 1.74	0.009	--	--	--
in MSS subgroup				1.32	1.01 - 1.73	0.04			
in MSI subgroup				1.58	0.88 - 2.82	0.12			
Abbreviation: MMR, mismatch repair; MSS, microsatellite stable; MSI, microsatellite instability; CI, confidence interval; DFS, disease free survival; OS, overall survival.									
* Recurrence disease was evaluated by the DFS for all studies excepted for PETACC3 (RFS, recurrence free survival) and NSABP (TTR, time to recurrence) trials.									
Pooled analysis of 5FU-adjuvant trials including: FFCD 8802/NCCTG 784852/NCCTG 874651/INT 0035/GIVIO/NCI-CTG C-03. These studies have randomized: surgery +/- 5FU/levamisole or leucovorin ²¹									
PETACC3 trial has randomized: 5FU +/- irinotecan ⁷									
CALGB 89803 trial has randomized : 5FU +/- irinotecan ^{18,45}									
NSABP-C07 trial has randomized: 5FU +/- oxaliplatin; NSABP-C08 trial has randomized: 5FU/oxaliplatin +/- bevacizumab ¹⁴									
N0147 trial has randomized: 5FU/oxaliplatin +/- cetuximab ¹⁹									